

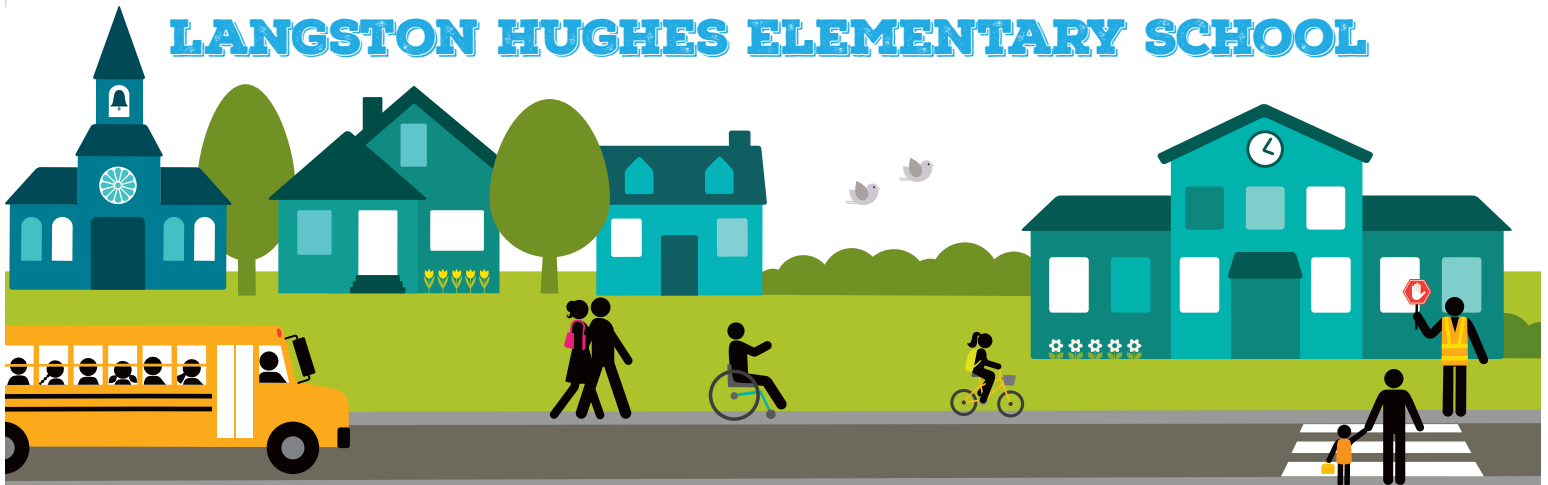


BE ACTIVE

SAFE ROUTES

BeActiveSafeRoutes.com

LANGSTON HUGHES ELEMENTARY SCHOOL



22%

of students walk
or bike to school

69%

of students have asked
to walk or bike to school

TOP PARENT CONCERNS

1. Distance to school.
2. Amount of traffic.
3. Speed of traffic.

69%

of students live within
1 mile of school

GET INVOLVED!

Contact Safe Routes to School Coordinator Michael Showalter at mshowalter@ldhealth.org or 785-856-5340.

SUCCESS STORIES

IDENTIFIED ROUTES for all public elementary and middle schools using input from traffic engineers, planners, schools and school district staff, public health officials and community members. School route maps can be found at BeActiveSafeRoutes.com.

ENCOURAGED WALKING/BIKING through events like Walk to School Day and Bike to School Day. Almost two-thirds of Lawrence parents say their kids want to walk or bike to school! We're giving students a chance to see how fun, easy and safe it can be to get to school on foot or bike.

CURRICULUM has been developed for all Lawrence public schools focusing on walking and biking safety education. In 2016, a mobile bike fleet was purchased to provide hands-on bicycle safety education in all Lawrence elementary schools!

WHAT'S NEXT

IMPROVE ROUTES

Safe Routes to School funding from the Kansas Department of Transportation will be used to fill sidewalk gaps and install flashing beacons at school crossings in Lawrence that don't have a traffic signal or crossing guard. Look for these changes in the 2017-18 school year!

JOIN THE MOVEMENT

These are just a few of the great things happening, and we've only just begun! We're looking for students, parents, school staff and community members to help make it easy, safe and fun for kids to walk and bike to school!

