



Together, day by day, building a healthy community

Rape | Youth and Adult

Definition | In the state of Kansas, rape is defined as knowingly engaging in sexual intercourse with a victim who does not consent to the sexual intercourse.¹ Refer to the state of Kansas rape statute, K.S.A. 21-5503, for full definition.

Importance | Nearly 1 in 5 (18.3%) women and 1 in 71 men (1.4%) reported experiencing rape at some time in their lives. In a study of college-age, undergraduate women, 19% experienced attempted or completed sexual assault since entering college.¹

Where are we | In 2012, reported incidents of rape per 1,000 population was 0.4 in Douglas County. The rate in Douglas County was the same as the state of Kansas in 2012.

Health Disparities | Among reported incidents of rape in Kansas in 2012:

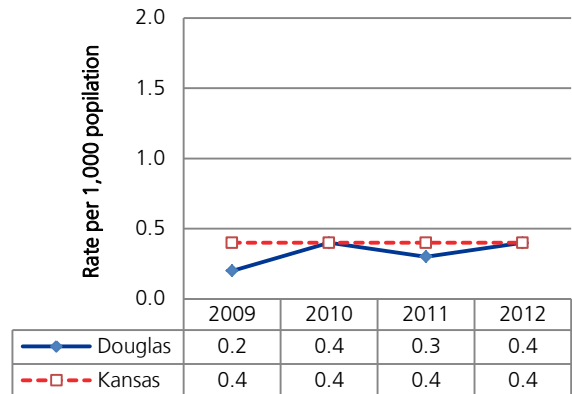
- The rape victim is usually a white (86.4%) female (96.9%) less than 25 years of age (66.5%). The rape offender is most often a white (69.6%) male (92.2%) between the ages of 15 and 29 (45.4%).¹

Healthy People 2020 Goal | Not Available

Additional Information | The most common prevention strategies currently focus on the victim, the perpetrator, or bystanders. Strategies that aim to equip the victim with knowledge, awareness, or self-defense skills are referred to as risk reduction techniques. Strategies targeting the perpetrator attempt to change risk and protective factors for sexual violence in order to reduce the likelihood that an individual will engage in sexually violent behavior. The goal of bystander prevention strategies is to change social norms supporting sexual violence and empower men and women to intervene with peers to prevent an assault from occurring.¹

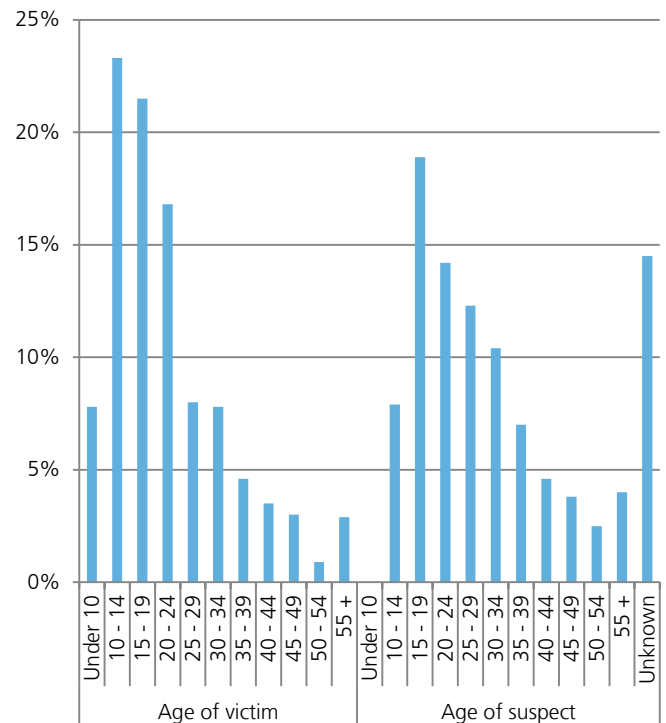
Trend Analysis

Reported incidents of rape per 1,000 population¹



Disparity Analysis

Reported incidents of rape by victim / suspect age¹
State of Kansas, 2012



¹Centers for Disease Control and Prevention

²Kansas Bureau of Investigation